



GET AHEAD OF THE CURVE

## **Procedure of Copy Components from the template to the client file**



**caseware**<sup>™</sup>

VERSION 1.00

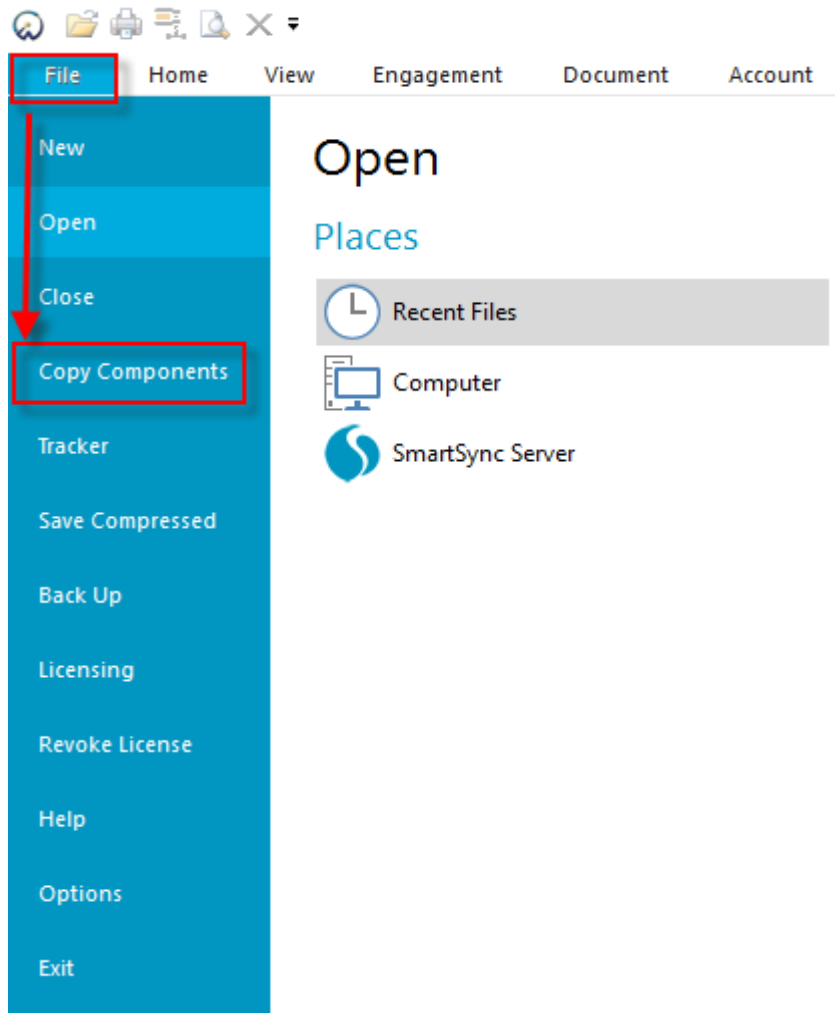
## **PROCEDURE SUMMARY**

- 1. Copy components from the Template into the client file..... 3**

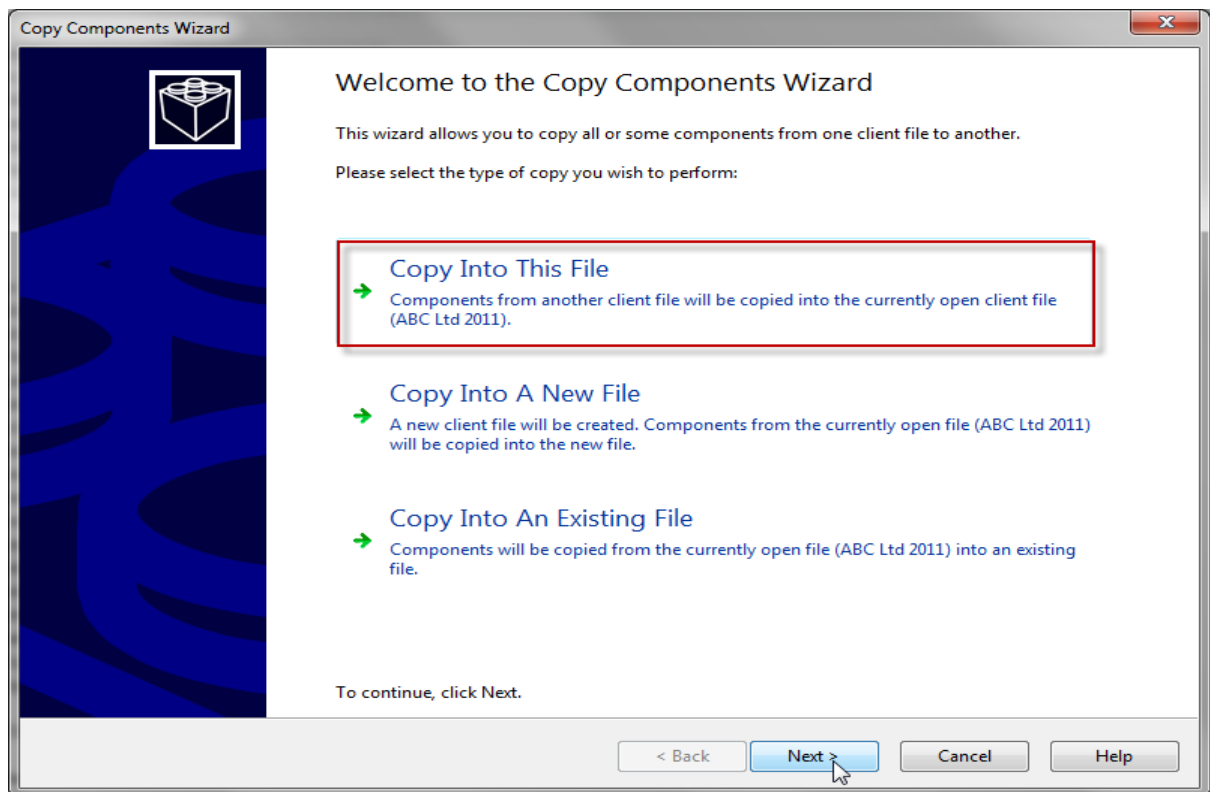
## 1. Copy components from the Template into the client file

Using the Copy Components feature, update the client file with the necessary components from the Template. Information Store and Mappings Structure.

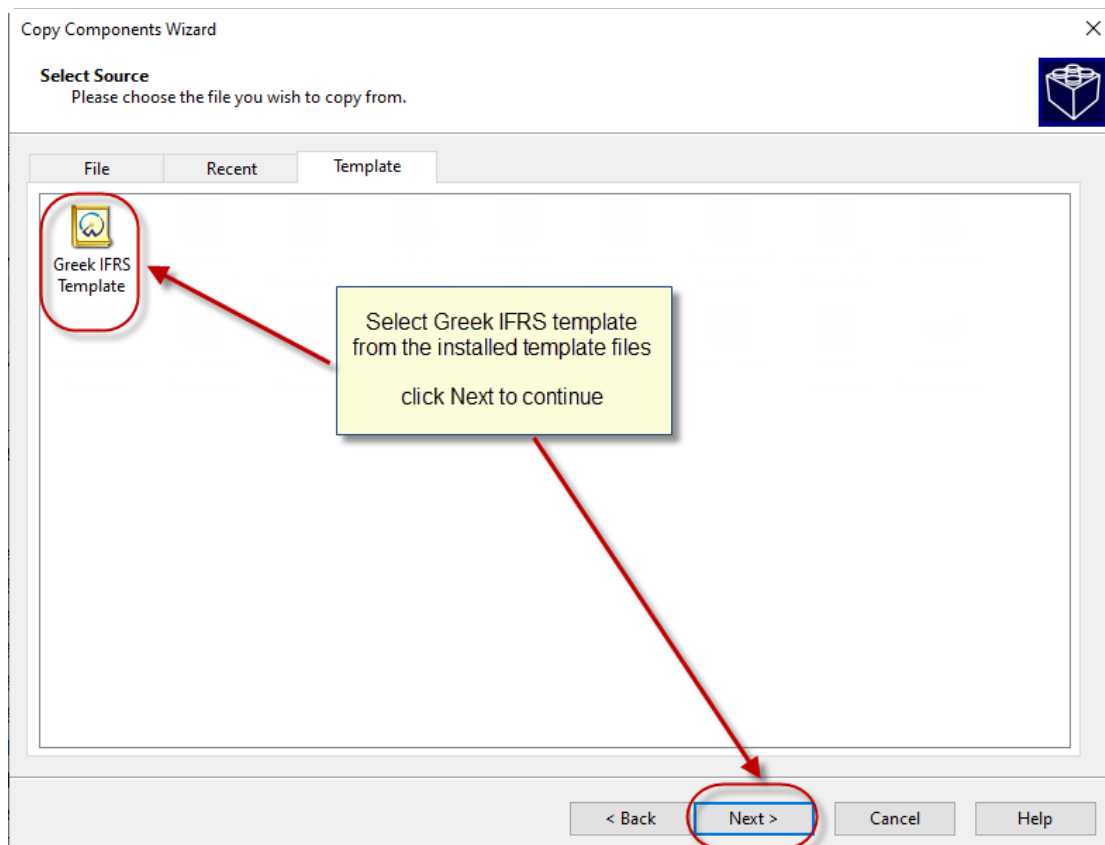
- a. Select the command **File / Copy Components**



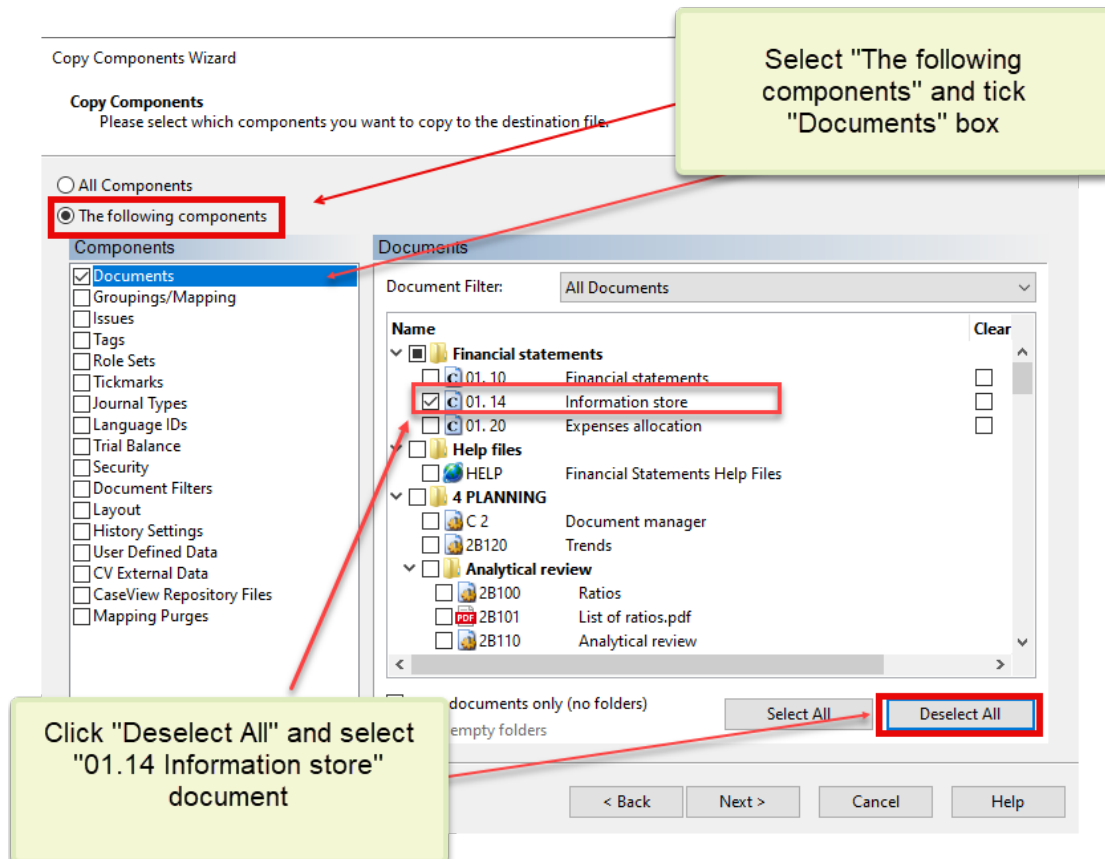
b. Select Copy into This File. Click Next.



c. Choose the IFRS Template and click Next.

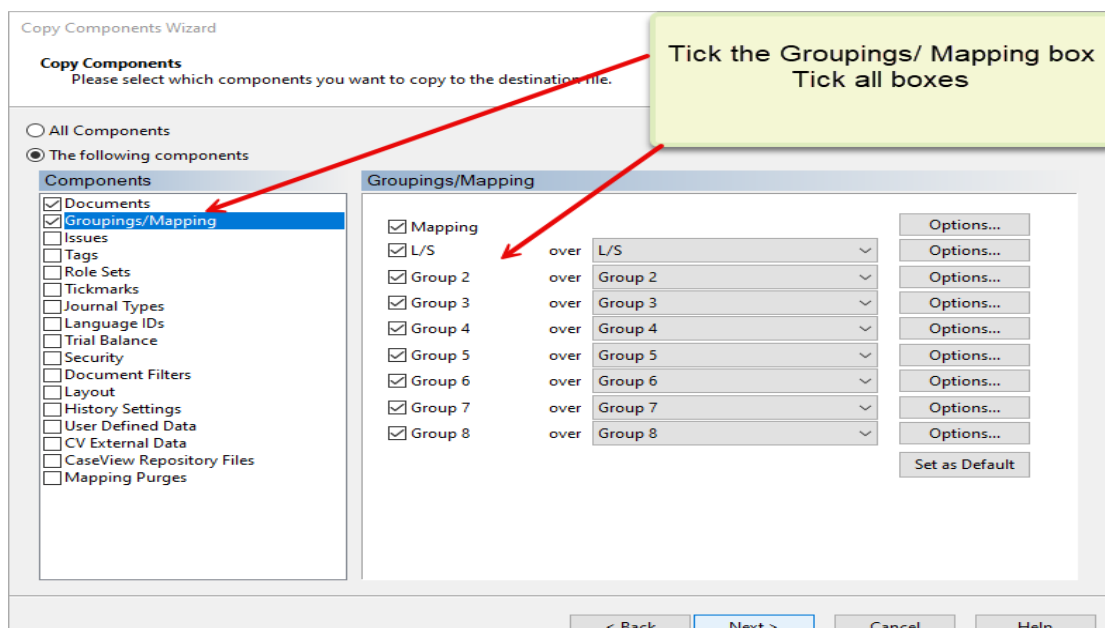


- d. In the Copy Components Wizard select "The following components" and the "Documents" box. Click "Deselect All" and then select document "01.14 Information store".

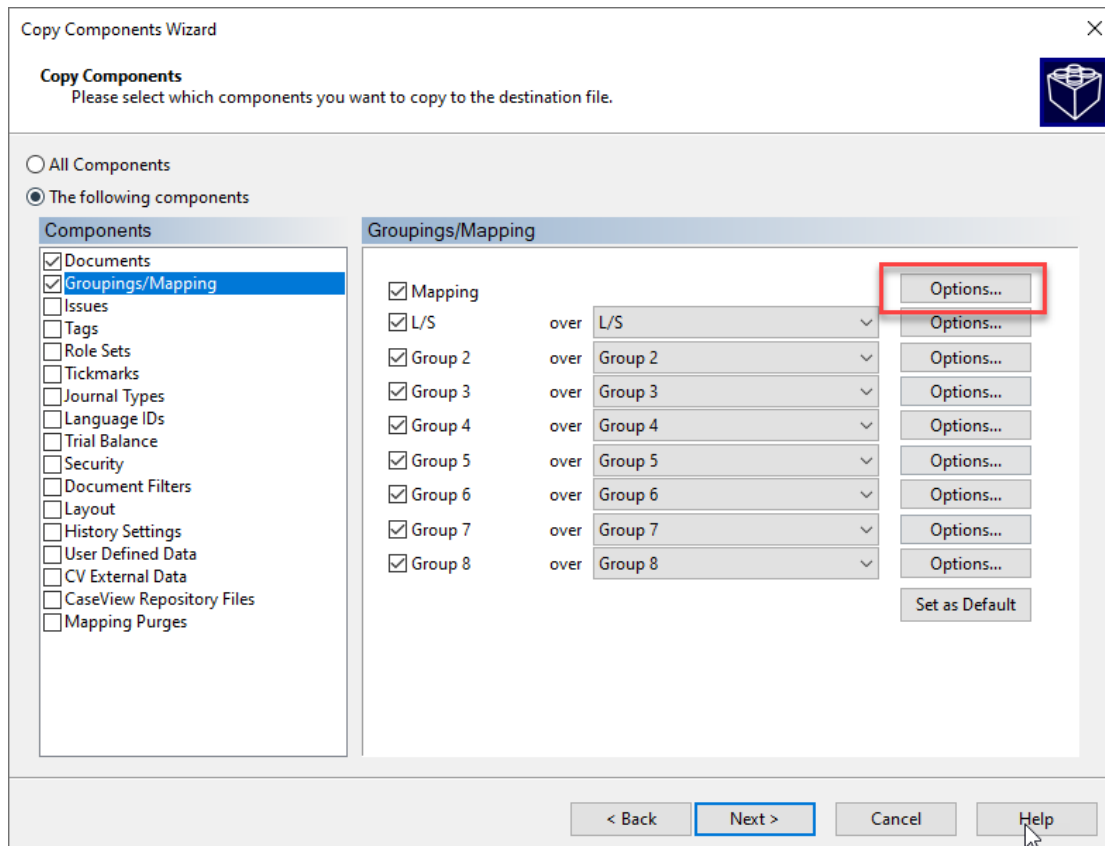


- e. In the same Copy Components Wizard, update the mapping structure from the latest Template.

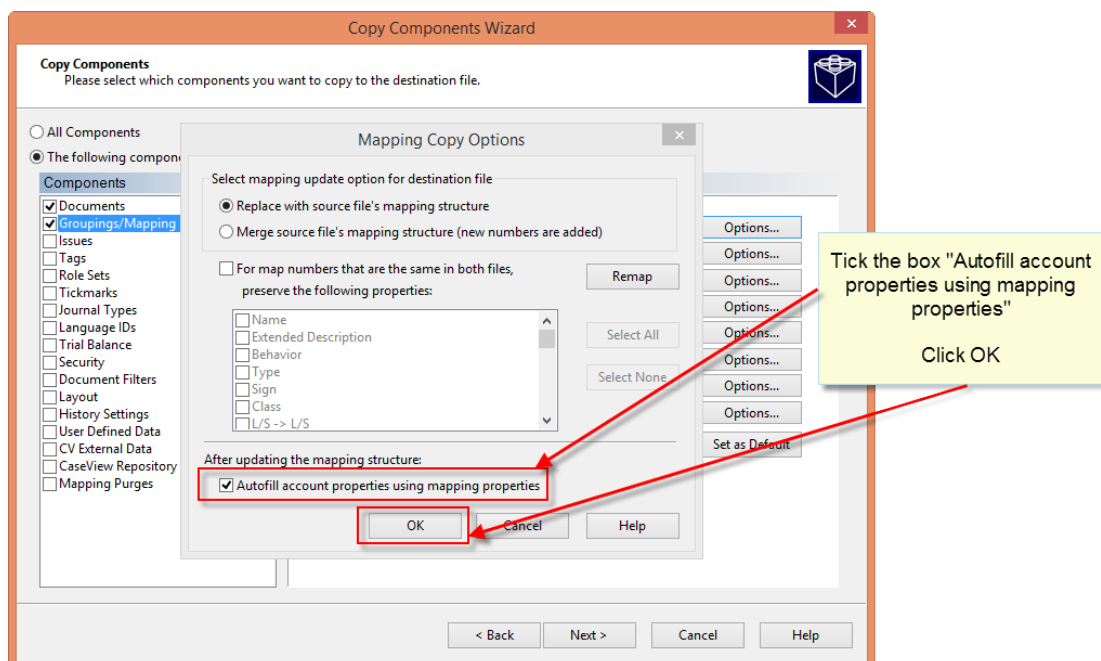
Tick the Grouping / Mapping box. Tick all Boxes.



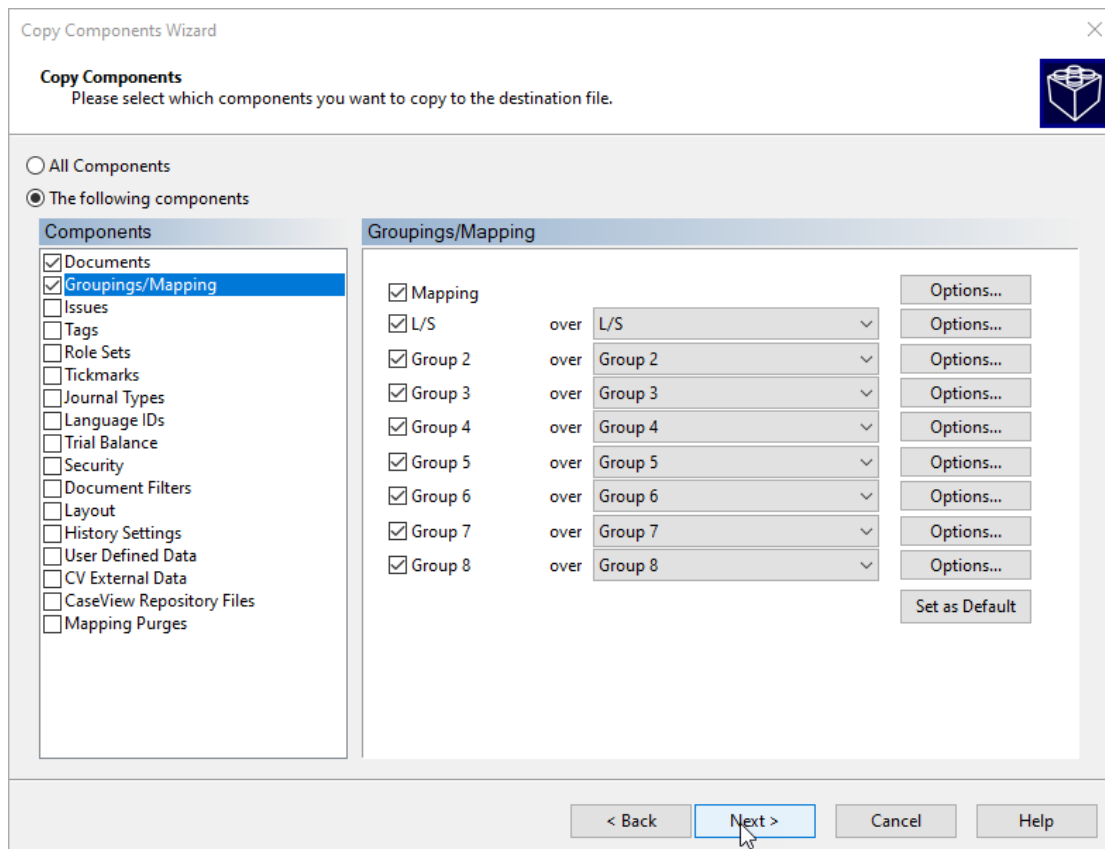
f. Select Options



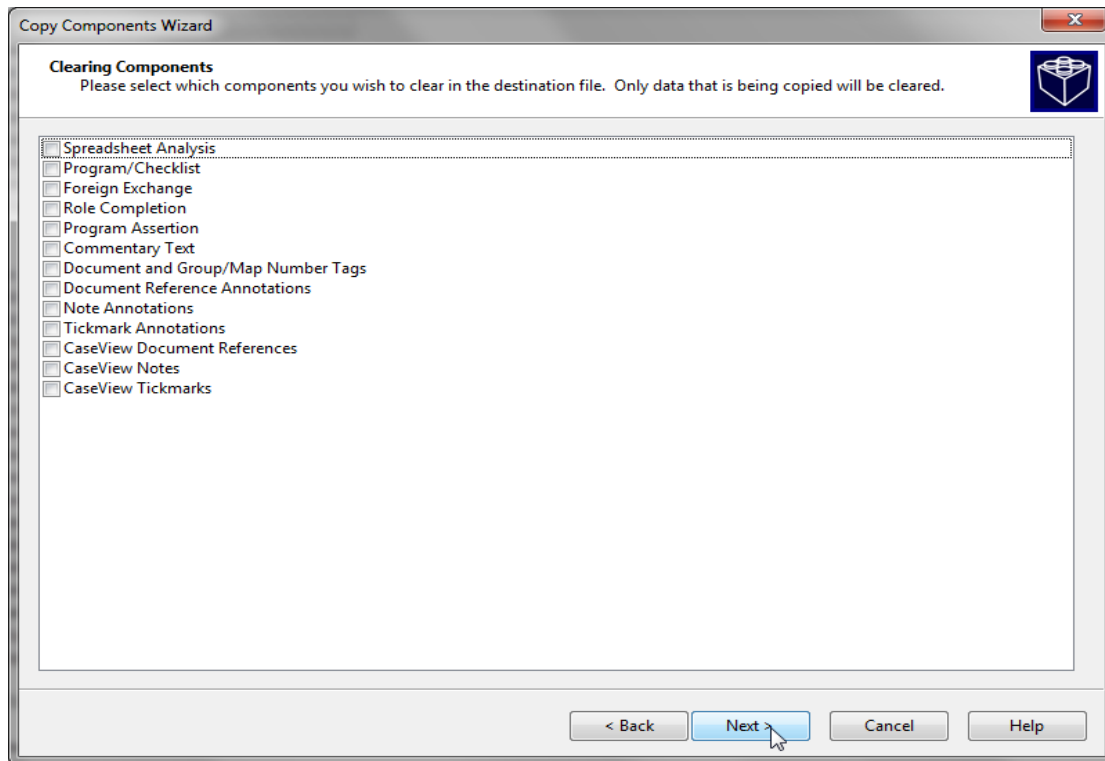
- g. Tick the box "Autofill account properties using mapping properties".  
Choose **OK** to perform Mapping Copy Options.



h. Click Next



i. Click Next to continue



j. Click Finish to complete the Copy Components wizard.

